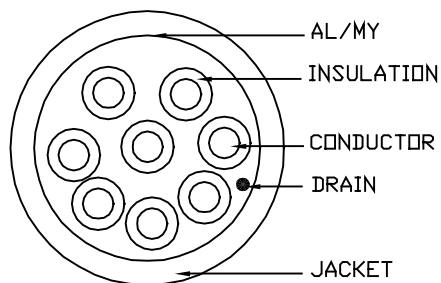
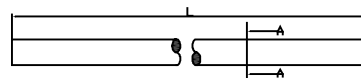
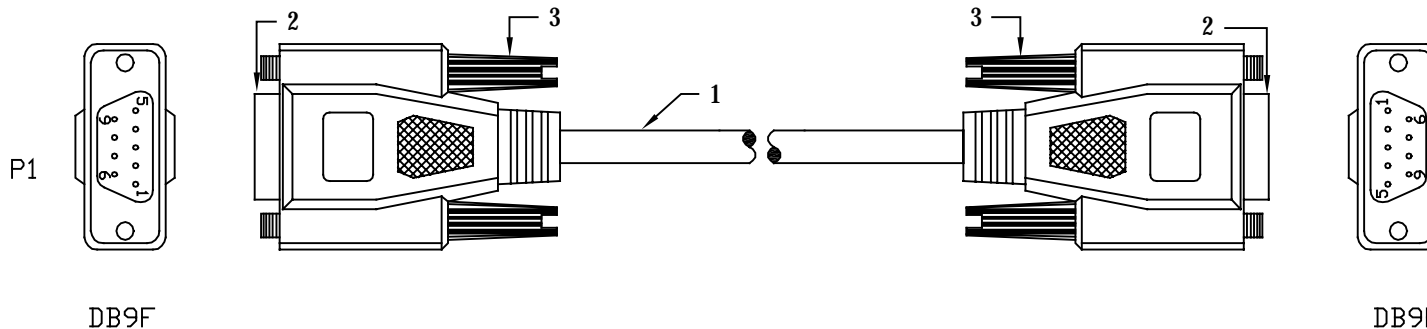


REVISIONS

REV	DESCRIPTION	APPROVED
	CB0928(A)	



NOTES:

- MOLDED CONNECTOR END REQUIREMENTS:
 - A. INNER MOLD USING PE
 - B. ALUMINUM FOIL WRAP TO CONNECTOR
 - C. PVC - 45P PLATINUM GRAY
- CABLE: [28AWG (7/0.12)*8C+AL/MY +DW(7/0.16)]TIN
 WIRE: $\varnothing = 0.78 \pm 0.03 \text{mm}$
 COLOR: P1 COLOR CODE
 JACKET: PVC $\varnothing = 5.0 \pm 0.15 \text{mm}$
 COLOR: PLATINUM GRAY
- FINISHED PRODUCTS LENGTH:
 - (1) LENGTH=1829mm TOLERANCE: $\pm 25.4 \text{mm}$
 - (2) LENGTH=3048mm TOLERANCE: $\pm 50.8 \text{mm}$
 - (1) LENGTH=4572mm TOLERANCE: $\pm 50.8 \text{mm}$
 - (1) LENGTH=7625mm TOLERANCE: $\pm 76.2 \text{mm}$

PIN	OUTS
DB9P FEMALE	DB9P FEMALE
4	1
1	6
6	4
2	3
3	2
5	5
7	8
8	7
9	9
Shell	Shell

ITEM NO	PART NAMES	Q'TY	REMARK
	INSULATION: UPON 1M ohm AND 1M ohm ELECTRIC CONDUCTION: INSIDE 1.5K ohm		
3	THUMBSCREW: MALE 4*47mm NICKEL-PLATING	4PCS	
2	CONNECTOR: DB9P FEMALE NICKEL-PLATING, INSULATOR COLOR: BLUE	2PCS	
1	CABLE: 8C+1 28AWG	1PCS	

Lex Tec Inc.
 160 Don Park Rd.
 Unit 5, Markham, On L3R 1C3
 905-475-9979 www.lextec.com

PRODUCT	DB9P FEMALE TO DB9P FEMALE	CUSTOMER		DRAWN	Hvon .W
CUS,NO	120-XXX	VERSION		CHECKED	Jackson Cang
DR,NO	SD120-XXX	DRAWN DATE	OCT.07.2000	APPROVERD	Jonny Chuang

