

Elite 350™ CAT5E 350 MHz LAN 4 *UTP Cable

Construction:

*Unshielded Twisted Pair

Item #	Flame Rating	Jacket	Color	Wt. Lb. / Wt.Kg	O.D.	Packaging Put-Up
TUR2404N09xx	CMR	PVC Riser	xx	22 / 9.979	4.7 ± .2mm	1000' Reelex
TUP2404N09xx	CMP	Plenum	xx	24 / 10.89	4.8 ± .2mm	1000' Reelex

xx= (BU) Blue, (BK) Black, (GY) Gray, (WH) White, (YE) Yellow, (RE) Red, (GR) Green

Industry Standards:

- UL/cUL Listed CMR, CMP
- UL, ETL and 3P Verified to Standards
- 3P Verified
- ISO/IEC-11801
- NEMA WC 63.1

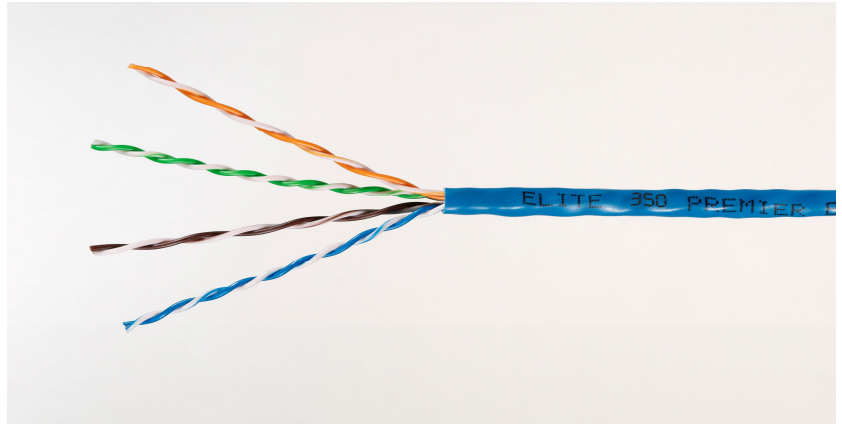
Applications:

- 10 BaseT, 100 BaseT, ATM 155
- 100 Vg-AnyLAN, Token Ring
- TP-PMD, 100 Mbs CDDI

Material Descriptions:

- Conductor: 24AWG bare solid copper
- Insulation: FRPE (CMR), FEP (CMP)

- Ripcord: Under jacket
- Jacket: FRPVC



Product Electrical Characteristics:

- Impedance: 100±15ohms
- Mutual Capacitance (max. nf/1000ft): 17.1
- DC Resistance (max. Ohms/1000ft): 28.6
- DC Resistance Unbalance of a pair: 5% max
- Propagation Delay Skew: 35 nS/100M
- Capacitance Unbalance (Pair to Ground): 330pf/100m max
- Normal Velocity of Propagation: Plenum 69%,
- Attenuation-to-Crosstalk Ratio: At 100MHz: 16.3dB/min. At 155MHz: 7.4dB/min.



Frequency MHz	ATT Max	NEXT Min	ACR Min	PS.NEXT Min	PS.ACR Min	ELFEXT Min	PS.ELFEXT Min	R.L. Min
1	2	74.3	72.3	72.3	70.3	67.8	64.8	20
4	3.8	65.5	61.5	63.3	59.5	55.7	52.7	23
8	5.4	60.8	55.4	28.8	53.4	49.7	46.7	24.5
10	6	59.3	53.3	57.3	51.3	47.8	44.8	25
16	7.6	56.3	48.7	54.3	46.7	43.7	40.7	25
20	8.5	54.8	46.3	52.8	44.3	41.7	38.7	25
25	9.6	53.3	43.7	51.3	41.7	39.8	36.8	24.3
31.25	10.7	51	41.2	49.9	39.2	37.9	34.9	23.6
62.5	15.5	47.4	31.9	45.1	29.9	31.8	28.8	21.5
100	19.9	44.3	24.4	42.3	22.4	27.8	24.8	20.1
155	25.3	41.5	16.2	39.5	14.2	23.9	20.9	18.8
200	29.2	39.8	10.6	37.8	8.6	21.7	18.7	18
240	36	32.6	N/A	30.6	N/A	16.2	13.2	17.4
300	41	31.2	N/A	29.2	N/A	14.2	11.2	16.8
350	44.9	30.1	N/A	28.1	N/A	12.9	9.9	16.3

