



MergePoint[®] 5224/5240

Service Processor Managers

Innovative Solutions for
Service Processor Management

MergePoint 5224/5240

Service Processor Managers

Challenge

The majority of servers purchased in the last three years contain a service processor (SP) – a hardware and software platform that operates independently from the main CPU and the server's operating system (OS). SPs enable remote access to power control, sensor readings and, in some cases, server configuration, monitoring and remote keyboard and mouse control even if the server's CPU or OS is locked up or otherwise inaccessible. SPs, including HP® Integrated Lights-Out (iLO), Intelligent Platform Management Interface (IPMI, versions 1.5 and 2.0), Dell® Remote Access Card (DRAC III, 4 and 5), IBM® Remote Supervisor Adapter II (RSA II) Sun® Advanced Lights Out Management (ALOM), Sun Integrated Lights Out Management (ILOM), Fujitsu-Siemens integrated Remote Management Card (iRMC) and IBM BladeCenter have been widely deployed in enterprises of all sizes. However, this technology is often underutilized as many enterprises are unaware of the potential power of SPs. Some are simply encumbered by compatibility issues caused by numerous proprietary as well as open source technologies, while others are hampered by security concerns.

Avocent Solution

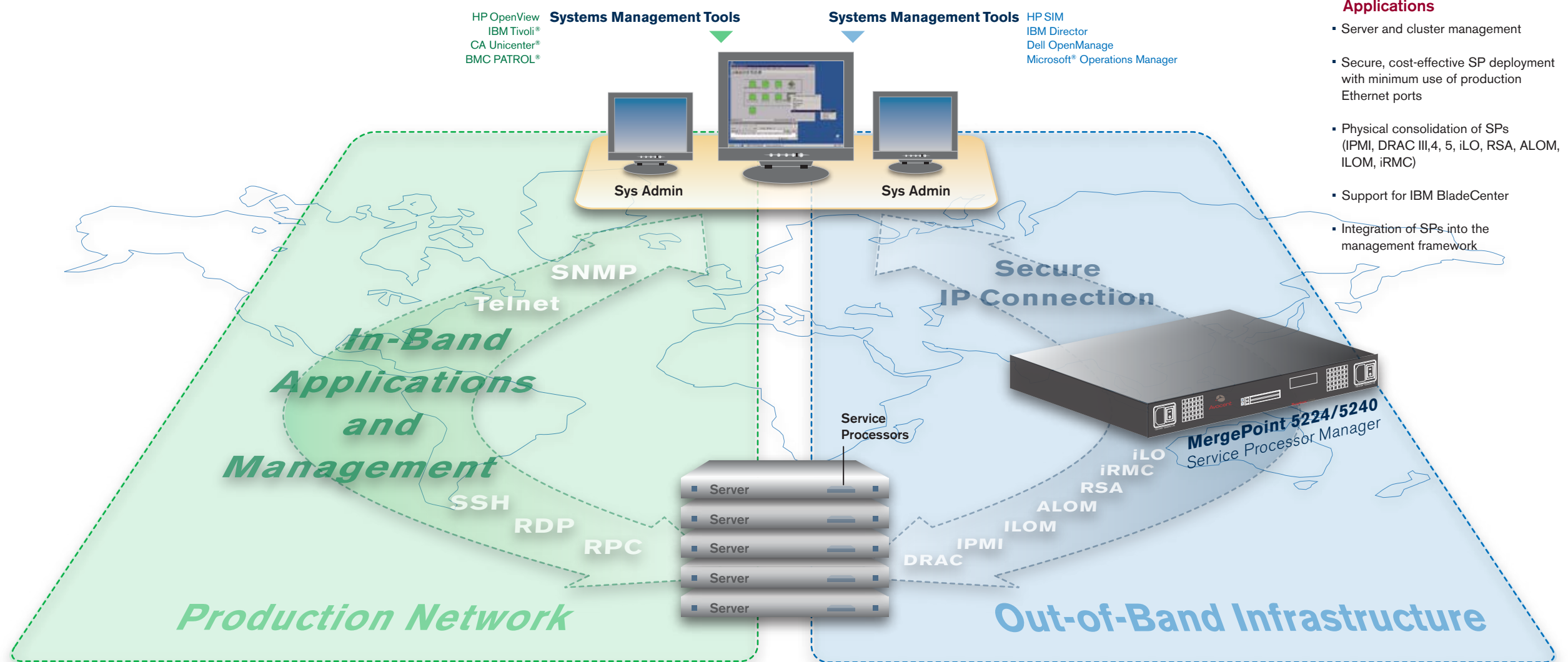
Remote management of servers and other IT assets is critical in today's increasingly complex and geographically dispersed data centers. Avocent® DS Series solutions for IT infrastructure management offer a complete management solution that integrates the MergePoint® 5224/5240 SP managers into a comprehensive, remote management system with enterprise-class security and a single, consolidated user interface. Other DS Series products include Cyclades® ACS advanced console servers, DSR® KVM over IP switches and Cyclades PM intelligent power distribution units (IPDUs), all controlled by DSView® 3 management software.

IT Infrastructure Management Tools Decrease IT Operational Costs and Increase IT Productivity

IT infrastructure management tools by Avocent complement existing network-dependent systems management applications with out-of-band access. Out-of-band access provides an alternate path for IT administrators to troubleshoot and restore critical IT assets, wherever they are located, saving valuable time, money and resources.

MergePoint 5224/5240 Service Processor Managers

The MergePoint 5224/5240 SP managers simplify management of servers with SP technologies by consolidating IP connections, user access and server health information. With multiple Ethernet ports, the MergePoint 5224/5240 appliances connect point-to-point with Ethernet-based service processors, such as iLO, IPMI, DRAC, RSA, ALOM, ILOM, iRMC and IBM BladeCenter. By isolating and protecting the connected SPs from the external production network, the MergePoint 5224/5240 appliances provide secure and efficient rack-level management with seamless integration into the management infrastructure. As part of the MergePoint 5200 series of SP managers, the MergePoint 5224/5240 appliances provide secure Serial over LAN (SoL), power control, hardware monitoring and the new DirectCommand feature, which enables transparent, secure access to the SP's native interface. When used in conjunction with DSView 3 management software, the MergePoint 5224/5240 appliances provide essential server coverage, which complements the overall management infrastructure.



Applications

- Server and cluster management
- Secure, cost-effective SP deployment with minimum use of production Ethernet ports
- Physical consolidation of SPs (IPMI, DRAC III, 4, 5, iLO, RSA, ALOM, ILOM, iRMC)
- Support for IBM BladeCenter
- Integration of SPs into the management framework

Groundbreaking innovation

for service processor management.

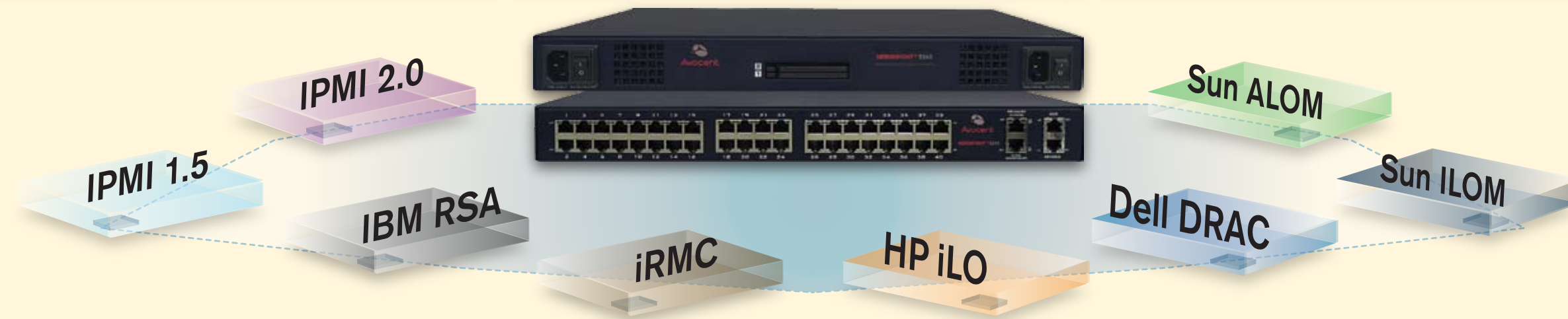
MergePoint 5224/5240 Service Processor Manager Features

Benefits

- Ethernet port and IP address savings and superior security when deploying SPs
- Consolidated server management regardless of the SP type
- Complete, full-featured remote server management from a single user interface
- Better auditing, faster troubleshooting
- Direct, transparent and secure access to native service processor Web interfaces
- Easier compliance with internal security policies and integration with existing security systems
- Easier deployment of new SPs

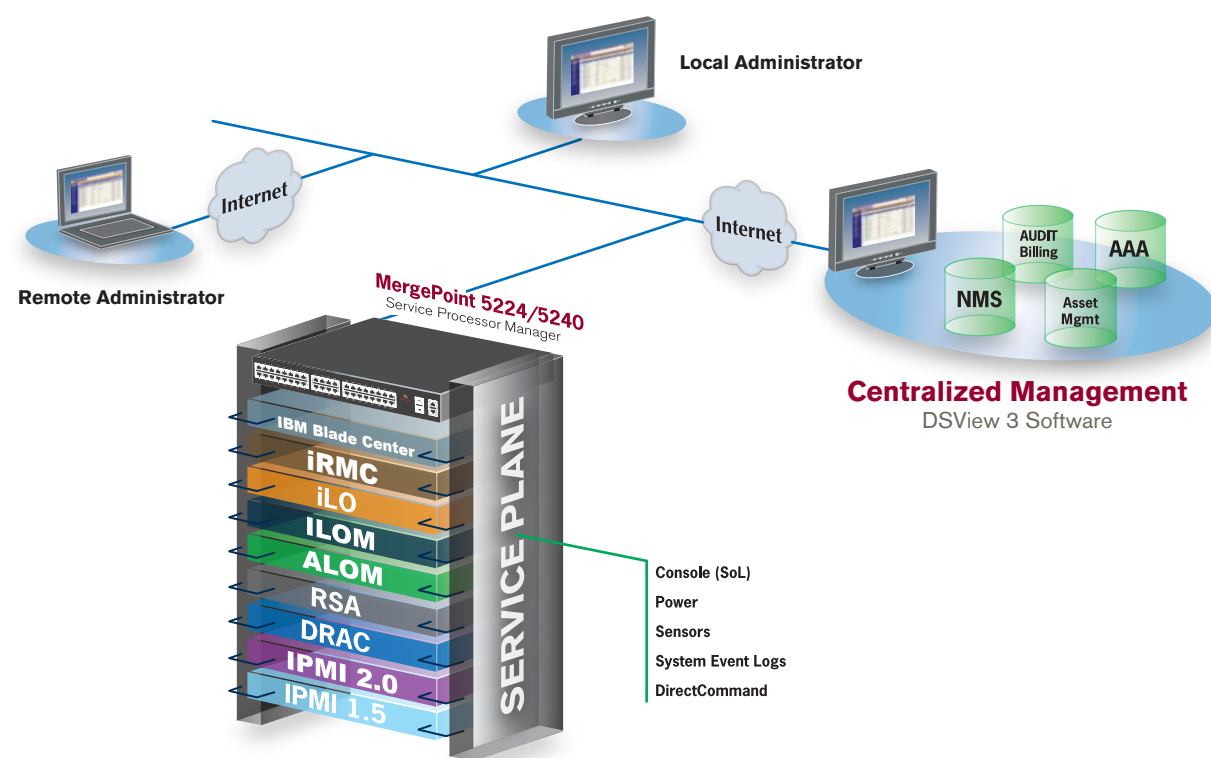
Multiple Server/Protocol Support

- DirectCommand feature – direct access to native service processor Web interfaces
- IPMI 1.5, 2.0; DRAC III, 4,5; iLO, iLO 2; RSA II; ALOM, ILOM, iRMC, IBM BladeCenter
- Ability to create custom SP profiles to interact with unsupported service processors
- Serial over LAN (SoL) for Ethernet-based consoles
- IPMI provisioning
- Remote control of multiple servers simultaneously



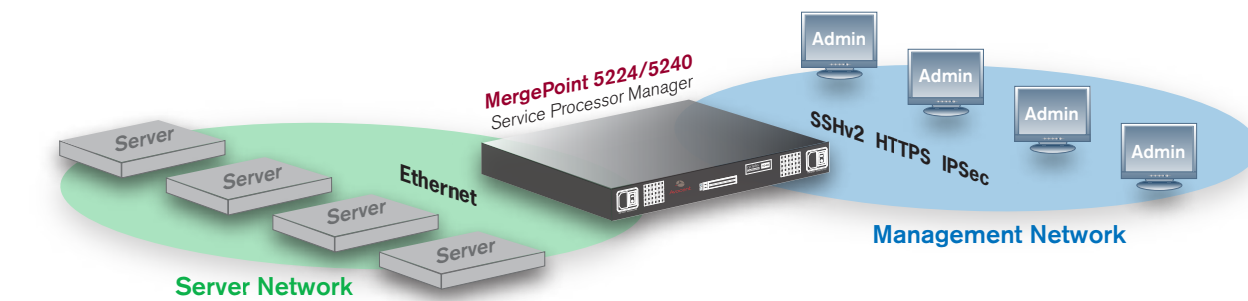
Security

- Physical separation of service processor connections from public networks allowing server access to authorized users only
- Support for local and remote authentication, authorization and auditing – RADIUS, TACACS+, LDAP, NIS, Active Directory, SMB, Kerberos
- Token-based strong authentication support (RSA SecurID®)
- Local fallback user authentication (remote failure)
- Group authorization from authentication servers
- Granular user access control to SP features
- Support for traffic encryption - SSHv2, HTTPS
- System event logs



Comprehensive Management

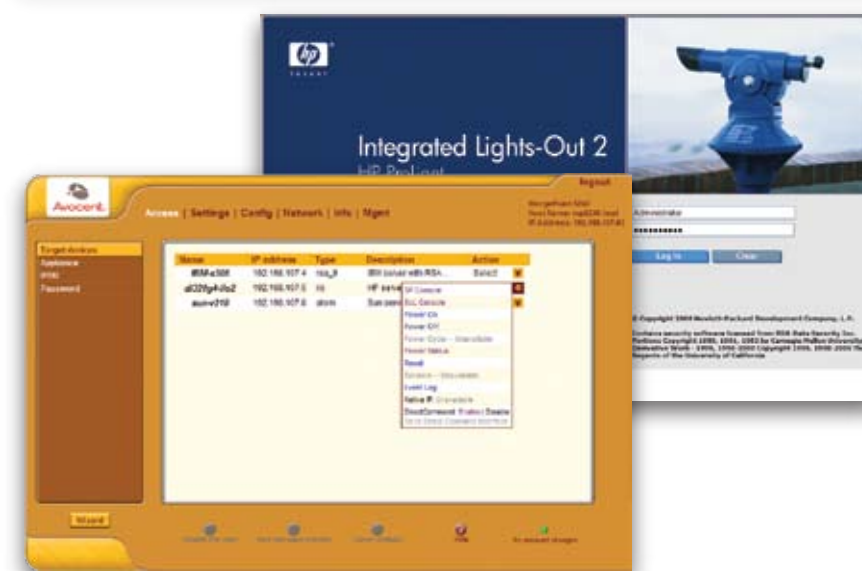
- Support for remote KVM and Virtual Media from SP (through DirectCommand feature)
- SSH commands for device management
- Physical consolidation of service processors
- SP auto discovery and DHCP for dynamic IP address assignment
- SoL, power control, hardware monitoring and alerts
- Integration with overall management infrastructure through DSView 3 management software
- Event and alert management
- SoL with data logging



User Interface

Single, easy-to-use interface for remote server management.

- Embedded Web interface
- Standards-based command line interface (SMASH CLP)
- Single, consolidated Web interface with DSView 3 software integration
- SSH device management command options



Enterprises can now streamline remote server management and reduce deployment costs.



Avocent.
The Power of Being There.®

www.avocent.com

Avocent, the Avocent logo, The Power of Being There, Cyclades, DSR, DSView and MergePoint are registered trademarks of Avocent Corporation or its affiliates. All other marks are the property of their respective owners.

Copyright © 2007. Avocent Corporation. All rights reserved.

0807-MGP5224/5240-BRO